

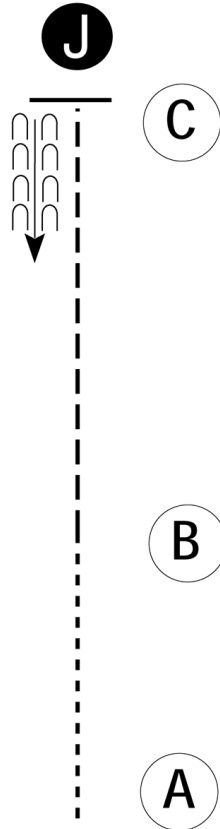
SWBA Summer Color & All Breed Show Series

Showmanship - All Walk Trot Classes

Show Date: 06-08-2019

w w w . H o r s e S h o w P a t t e r n s . c o m

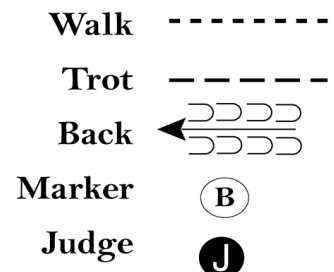
w w w . H o r s e S h o w P a t t e r n s . c o m



Be ready at A.

1. Walk to B.
2. Trot to C.
3. Stop and set up for inspection.
4. When dismissed, back approximately one horse length.

Follow the instructions of your ring steward.



[S/WT-41]

Pattern Provided by:

SWBA

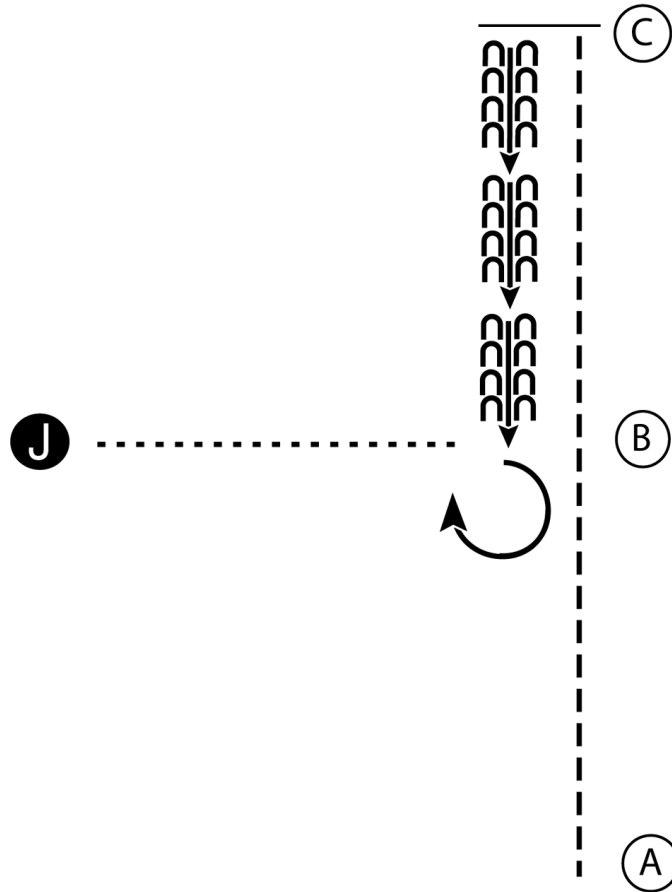
SWBA Summer Color & All Breed Show Series

Showmanship - All Classes Except Walk Trot


Show Date: 06-08-2019

w w w . H o r s e S h o w P a t t e r n s . c o m

w w w . H o r s e S h o w P a t t e r n s . c o m



1. Trot from A to C.
2. Stop at C.
3. Back to B.
4. Perform a 270 degree turn.
5. Walk to the judge and set up for inspection.
6. When dismissed walk to line-up.

Walk
 Trot - - - - -
 Back ← 
 Marker (B)
 Judge (J)

[S/1-3]

Pattern Provided by:
SWBA

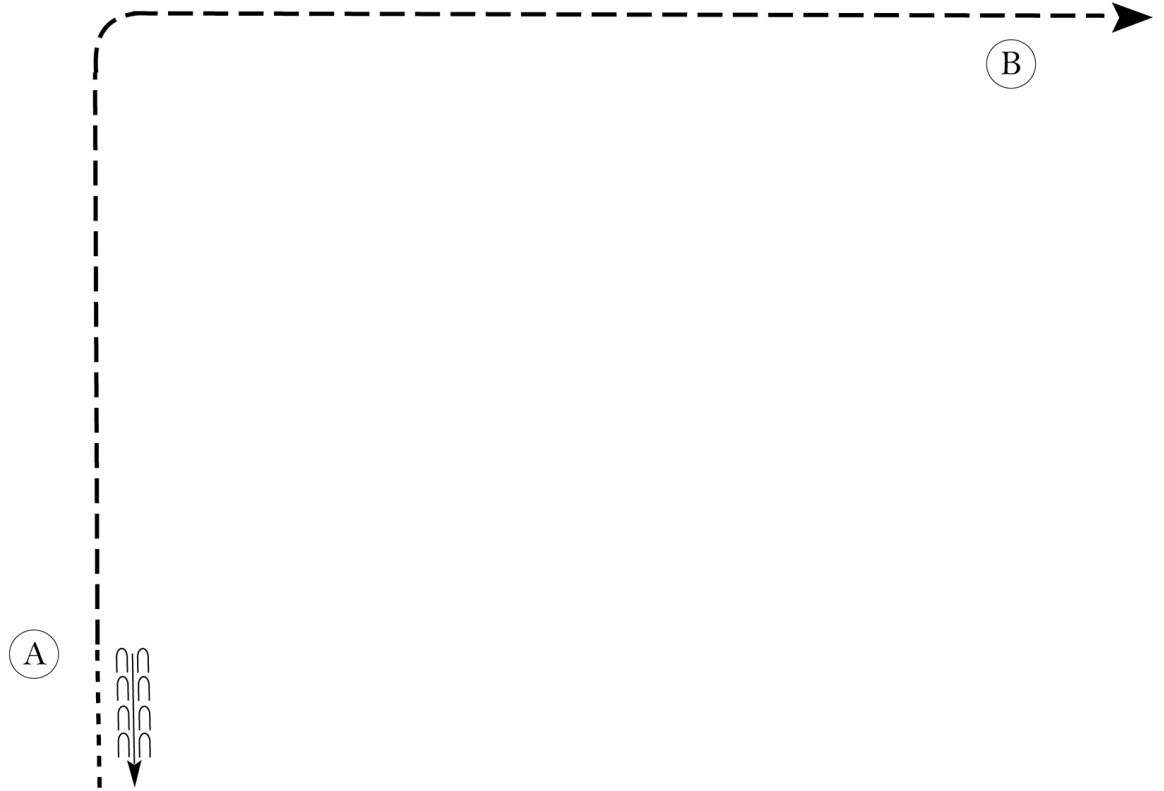
SWBA Summer Color & All Breed Show Series

Equitation - All Walk Trot Classes

Show Date: 06-08-2019

www.HorseShowPatterns.com

www.HorseShowPatterns.com



Be ready at A.

1. When acknowledged, back approximately one horse length.
2. Walk to A.
3. Trot on the right diagonal until even with B.
4. Change diagonals and trot to and past B.
5. Pattern is over once you have passed B.

Follow the instructions of your ring steward.

Walk	-----
Trot	- - - - -
Extended Trot	-----
Canter	—————
Leg Yield	
Lead Change	↘
Back	←←←←←
Marker	⊙
Sidepass	←-----→
Hand Gallop	—————

[HSE/WT-65]

Pattern Provided by:

SWBA

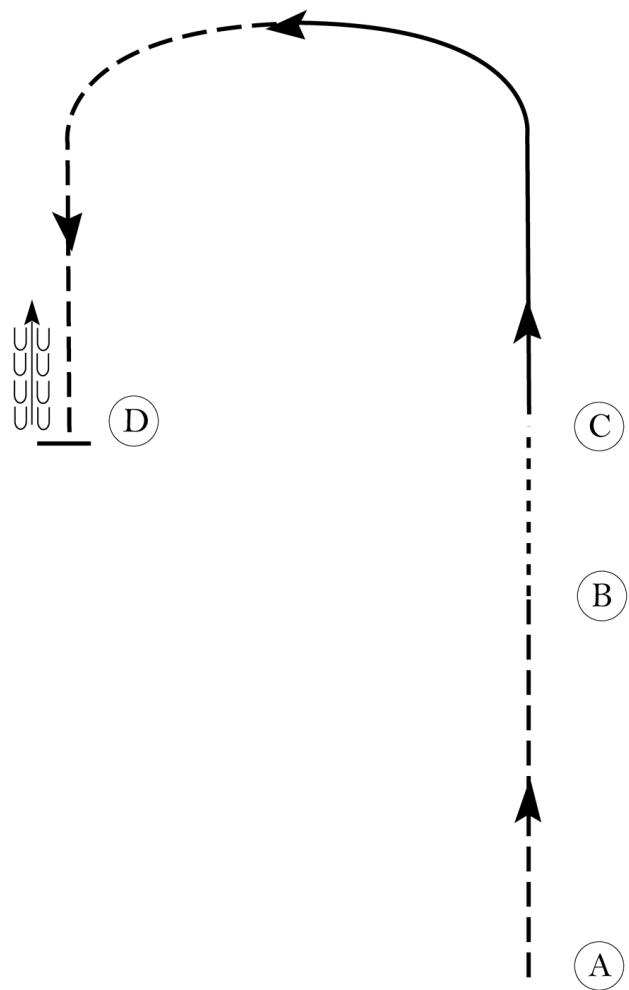
SWBA Summer Color & All Breed Show Series

Equitation - All Classes Except Walk Trot

Show Date: 06-08-2019

www.HorseShowPatterns.com

www.HorseShowPatterns.com



Be ready at A.

1. Posting trot on the left diagonal from A to B.
2. Walk from B to C.
3. Left lead canter at C.
4. When at the top of the arc, transition to a posting trot on the right diagonal to D.
5. Stop and back approximately one horse length at D.

Exit at a sitting trot.

Walk	-----
Trot	- - - - -
Extended Trot	— — — — —
Canter	—————
Leg Yield	
Lead Change	— / —
Back	← ← ← ← ←
Marker	(B)
Sidepass	← — — — — ←
Hand Gallop	— — — — —

[HSE/1-20]

Pattern Provided by:

SWBA

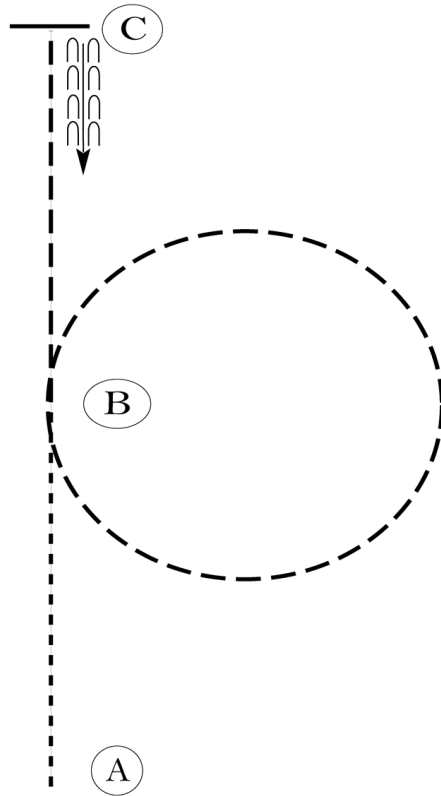
SWBA Summer Color & All Breed Show Series

Horsemanship - All Walk Trot Classes

Show Date: 06-08-2019

www.HorseShowPatterns.com

www.HorseShowPatterns.com



Be ready at A.

1. Walk from A to B.
2. Jog a circle to the right at B.
3. Continue to jog to C.
4. Stop at C and back approximately one horse length.

Follow instructions of your ring steward.

Walk	-----
Jog	- - - - -
Extended Jog	— — — —
Lope	—————
Leg Yield	
Lead Change	— / —
Back	← — — — —
Marker	⊙ B
Sidepass	← — — — — →

[WH/WT-26]

Pattern Provided by:

SWBA

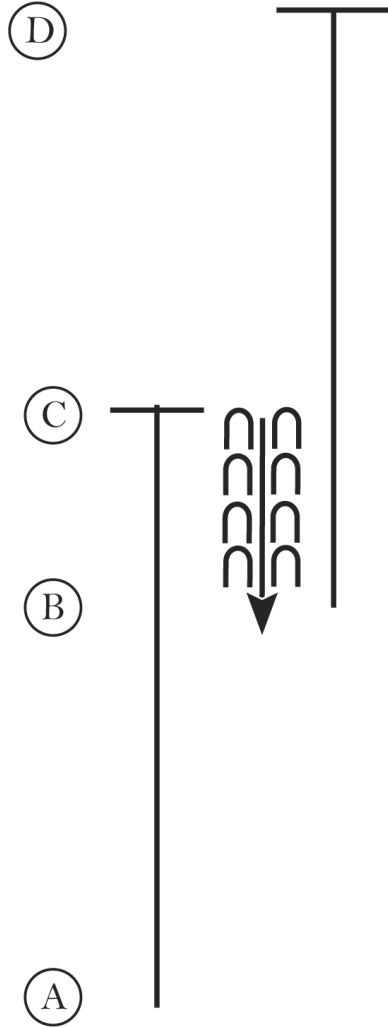
SWBA Summer Color & All Breed Show Series

Horsemanship - All Classes Except Walk Trot

Show Date: 06-08-2019

www.HorseShowPatterns.com

www.HorseShowPatterns.com



1. Lope on the right lead A to C
2. At C stop and back to B
3. Lope on the left lead to D
4. Stop at D and wait to be dismissed

Walk
Jog	-----
Extended Jog	-----
Lope	—————
Leg Yield	
Lead Change	↘
Back	← C C C C C C C C C C
Marker	⊙ (B)
Sidepass	←-----→

[WH/1-8]

Pattern Provided by:
SWBA

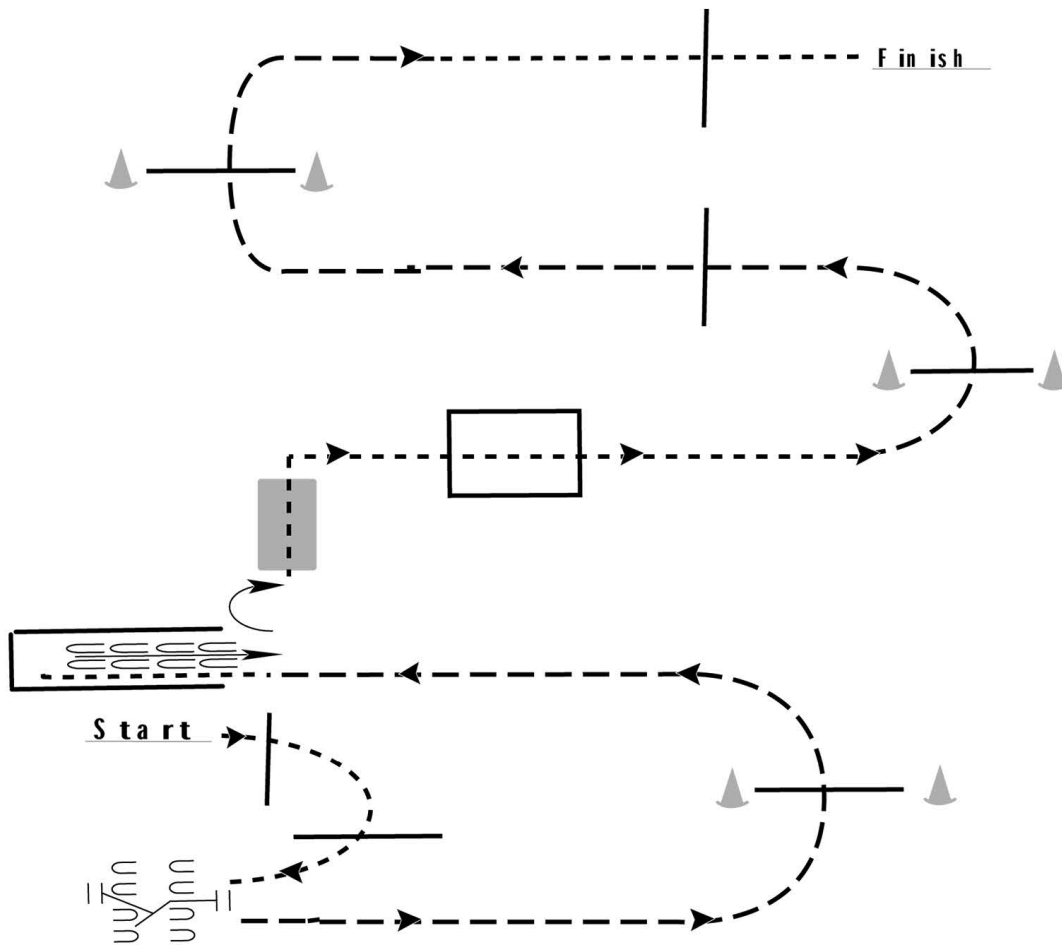
SWBA Summer Color & All Breed Show Series

Trail - All In-Hand & Walk Trot Trail Classes

Show Date: 06-08-2019

w w w . H o r s e S h o w P a t t e r n s . c o m

w w w . H o r s e S h o w P a t t e r n s . c o m



1. Walk over two poles to gate
2. Work gate with left hand
3. Trot over pole to chute
4. Walk into chute
5. Back out of chute
6. Walk over bridge
7. Walk through box
8. Trot over poles
9. Break to the walk and walk over final pole to finish

Walk	-----
Jog	- - - - -
Extended Jog	- - - - -
Lope	—————
Leg Yield	
Lead Change	↗
Back	←←←←←
Marker	Ⓚ
Sidepass	←-----←

[T/WT-9]

Pattern Provided by:
SWBA

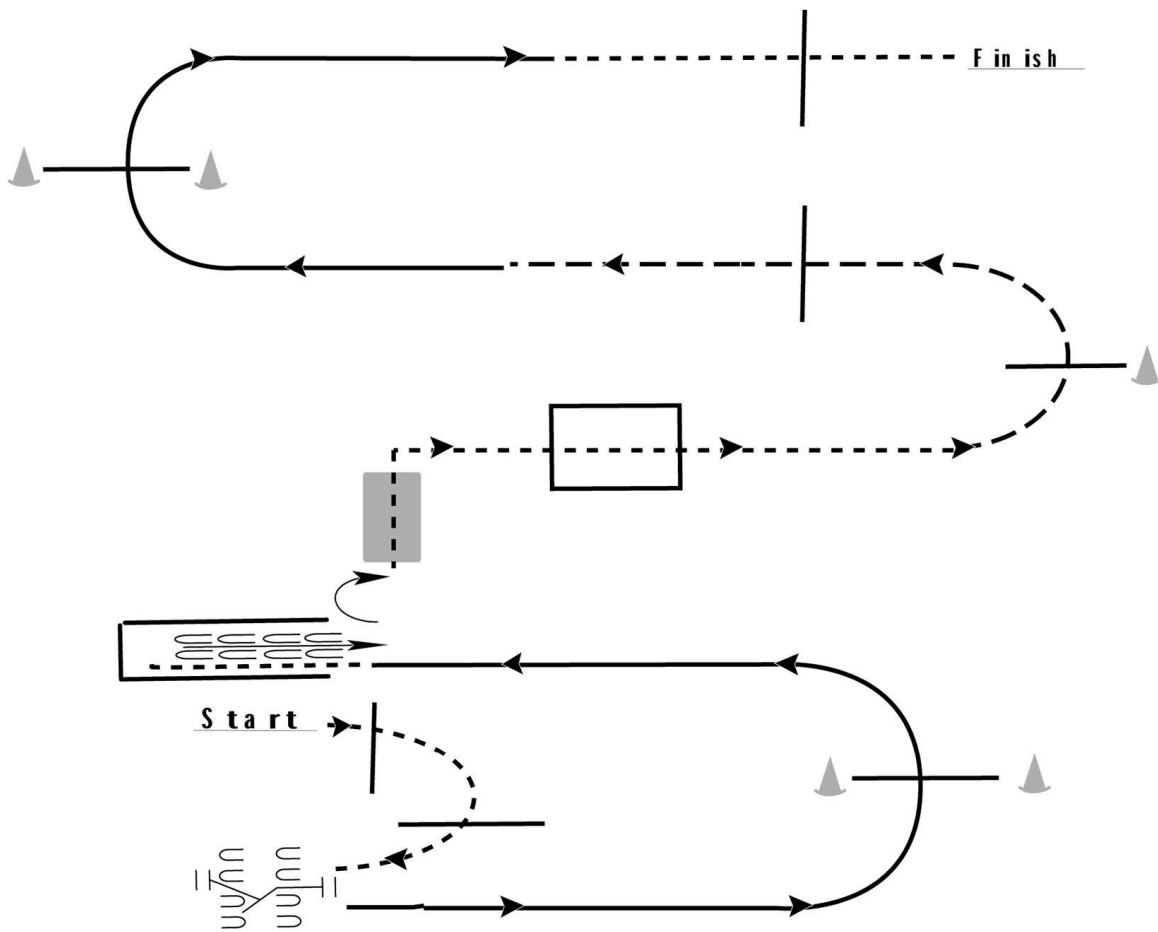
SWBA Summer Color & All Breed Show Series

Trail - All Trail Except In-Hand & Walk Trot

Show Date: 06-08-2019

www.HorseShowPatterns.com

www.HorseShowPatterns.com



1. Walk over two poles to gate
2. Work gate with left hand
3. Lope on the left lead over pole
4. Break to a walk and walk into chute
5. Back out of chute
6. Walk over bridge
7. Walk through box
8. Trot over poles
9. Lope on the right lead over pole
10. Break to the walk and walk over final pole to finish

Walk	-----
Jog	- - - - -
Extended Jog	- - - - -
Lope	—————
Leg Yield	
Lead Change	↘
Back	←←←←← ←←←←←
Marker	(B)
Sidepass	←-----←

[T/1-9]

Pattern Provided by:
SWBA